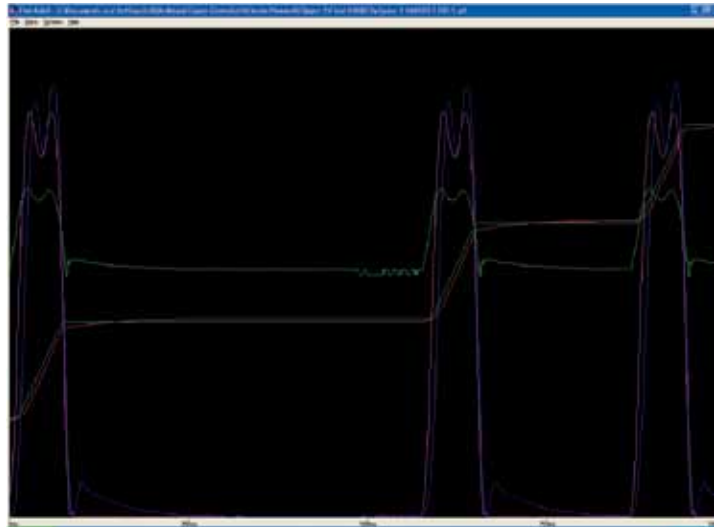
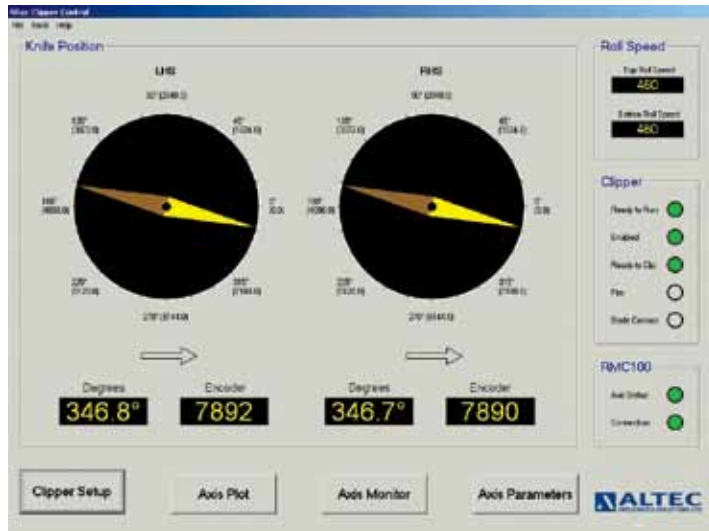


# ROTARY CLIPPER CONTROLLER

STATE-OF-THE-ART CONTROL OF ROTARY VENEER CLIPPERS



## INTRODUCTION

The ALTEC Rotary Clipper Controller is the most practical, cost-effective solution available without any sacrifice in performance. Better than 40 millisecond knife response time is achieved at 500 FPM roll speed. Even better response times are possible at higher roll speeds. The knife speed is synchronized to the rolls at blade contact for increased roll life. Clipping accuracy and synchronization during “flying” clips is maintained due to our advanced servo control methods (please call for detailed information).

**We offer complete engineered systems including hydraulic and mechanical components required for a “turn-key” installation. Typical systems can be installed and commissioned in a single day.**

## FEATURES

- Better than 40 millisecond response time.
- Operation at speeds up to 800 FPM.
- Clipper knife synchronized to clipper rolls for increased roll life.
- Clipper rolls synchronized to infeed belt to eliminate flipping of veneer.
- User-friendly touchscreen graphical user interface.
- Diagnostic screens for servo performance monitoring and tuning.